

PROJECT NO.	SHEET NO.	TOTAL NO.
11C.095085, 11C.095086		
11CR.20951.19		

SUMMARY OF QUANTITIES

PROJECT	COUNTY	MAP	ROUTE	DESCRIPTION	TP	FINAL SURFACE TESTING REQUIRED	LENGTH	WIDTH	ASPHALT SURFACE TREATMENT, MAT & SEAL	ASPHALT SURFACE TREATMENT, SPLIT SEAL	ASPHALT SURFACE TREATMENT, TRIPLE SEAL	ASPHALT SURFACE TREATMENT, TRIPLE SEAL (LIGHTWEIGHT AGGREGATE)
NO		NO			NO		MI	FT	SY	SY	SY	SY
11C.095085	Watauga	1	SR 1201-A	FROM SR 1206 TO SR 1207	2	NO	1.58	19			17,612	
TOTAL FOR PROJ NO. 11C.095085												
11C.095086	Watauga	2	SR 1221-B	FROM SR 1222 TO TENN STATE LINE	2	NO	0.89	20			10,443	
TOTAL FOR PROJ NO. 11C.095086												
11CR.20951.19	Watauga	118	SR 1335	FROM BEGIN PVMT TO SR 1340	2	NO	0.55	20			6,453	
11CR.20951.19	Watauga	119	SR 1351	FROM SR 1353 TO ASHE CO LINE	2	NO	1	18			10,560	
11CR.20951.19	Watauga	120	SR 1379	FROM SR 1333 TO EOM	2	NO	0.75	16			7,040	
11CR.20951.19	Watauga	121	SR 1108	FROM SR 1107 TO SR 1109	2	NO	1.09	18			11,510	
11CR.20951.19	Watauga	122	SR 1181	FROM SR 1112 TO EOM	2	NO	0.16	18			1,690	
11CR.20951.19	Watauga	123	SR 1225	FROM SR 1226 TO SR 1221	2	NO	0.75	18			7,920	
11CR.20951.19	Watauga	124	SR 1113	FROM SR 1109 TO SR 1114	2	NO	1.15	18			12,144	
11CR.20951.19	Watauga	125	SR 1549	FROM SR 1541 TO PVMT CHANGE	2	NO	0.51	18			5,386	
11CR.20951.19	Watauga	126	SR 1529	FROM PVMT CHANGE TO SR 1654	2	NO	0.95	18			10,032	
11CR.20951.19	Watauga	127	SR 1524	FROM SR 1608 TO SR 1514	2	NO	0.83	18			8,765	
11CR.20951.19	Watauga	128	SR 1504	FROM EOM TO SR 1505	2	NO	1.85	18			19,536	
11CR.20951.19	Watauga	129	SR 1504	FROM SR 1505 TO END OF PVMT	2	NO	0.07	16			657	
11CR.20951.19	Watauga	130	SR 1504	FROM BEGIN PVMT TO EOM	2	NO	0.53	16			4,975	
11CR.20951.19	Watauga	131	SR 1333	FROM NC 194 TO SR 1395	2	NO	1.8	18			19,008	
11CR.20951.19	Watauga	132	SR 1333	FROM SR 1395 TO SR 1331	2	NO	0.41	18			4,330	
11CR.20951.19	Watauga	133	SR 1201	FROM SR 1206 TO SR 1203	2	NO	2.13	20			24,992	
11CR.20951.19	Watauga	134	SR 1160	FROM SR 1114 TO EOM	2	NO	0.64	16			6,008	
11CR.20951.19	Watauga	135	SR 1122	FROM MP 5.5 TO BRIDGE	2	NO	1.36	18			14,362	
11CR.20951.19	Watauga	136	SR 1122	FROM NC 194 TO SR 1130	2	NO	1.35	18			14,256	
11CR.20951.19	Watauga	137	SR 1134	FROM NC 194 TO BEGIN 18' PVMT	2	NO	1.15	20			13,493	
11CR.20951.19	Watauga	138	SR 1134	FROM BEGIN 18' PVMT TO BRIDGE	2	NO	1	18			10,560	
11CR.20951.19	Watauga	139	SR 1134	FROM BRIDGE TO EOM	2	NO	1.15	18			12,144	
11CR.20951.19	Watauga	140	SR 1168	FROM NC 105 TO EOM	2	NO	0.19	16			1,784	
11CR.20951.19	Watauga	141	SR 1212	FROM SR 1211 TO EOM	2	NO	0.94	16			8,824	
11CR.20951.19	Watauga	142	SR 1306	FROM SR 1323 TO SR 1102	2	NO	1.26	18			13,306	
11CR.20951.19	Watauga	143	SR 1306	FROM BEGIN PVMT TO SR 1383	2	NO	1.1	18			11,616	
11CR.20951.19	Watauga	144	SR 1306	FROM SR 1383 TO SR 1303	2	NO	0.6	22			7,744	
11CR.20951.19	Watauga	145	SR 1308	FROM SR 1306 TO SR 1371	2	NO	1	20			11,733	
11CR.20951.19	Watauga	146	SR 1308	FROM SR 1371 TO SR 1309	2	NO	1.79	20			21,003	
11CR.20951.19	Watauga	147	SR 1312	FROM US 421 TO SR 1373	2	NO	0.93	20			10,912	
11CR.20951.19	Watauga	148	SR 1334	FROM NC 194 TO SR 1350	2	NO	0.8	17			7,979	
TOTAL FOR PROJ NO. 11CR.20951.19												
							29.79				320,722	
GRAND TOTAL							32.26				348,777	

PROJECT NO.	SHEET NO.	TOTAL NO.
11C.095085, 11C.095086		
11CR.20951.19		

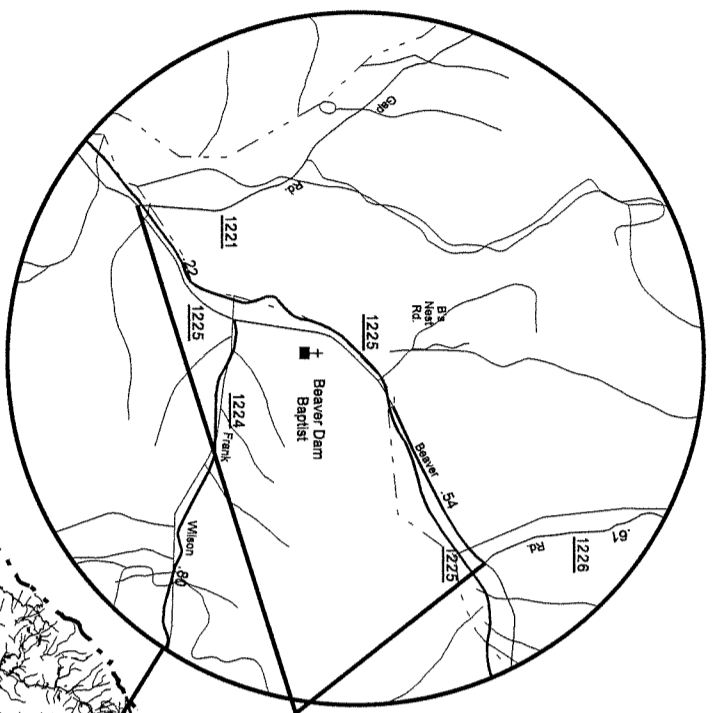
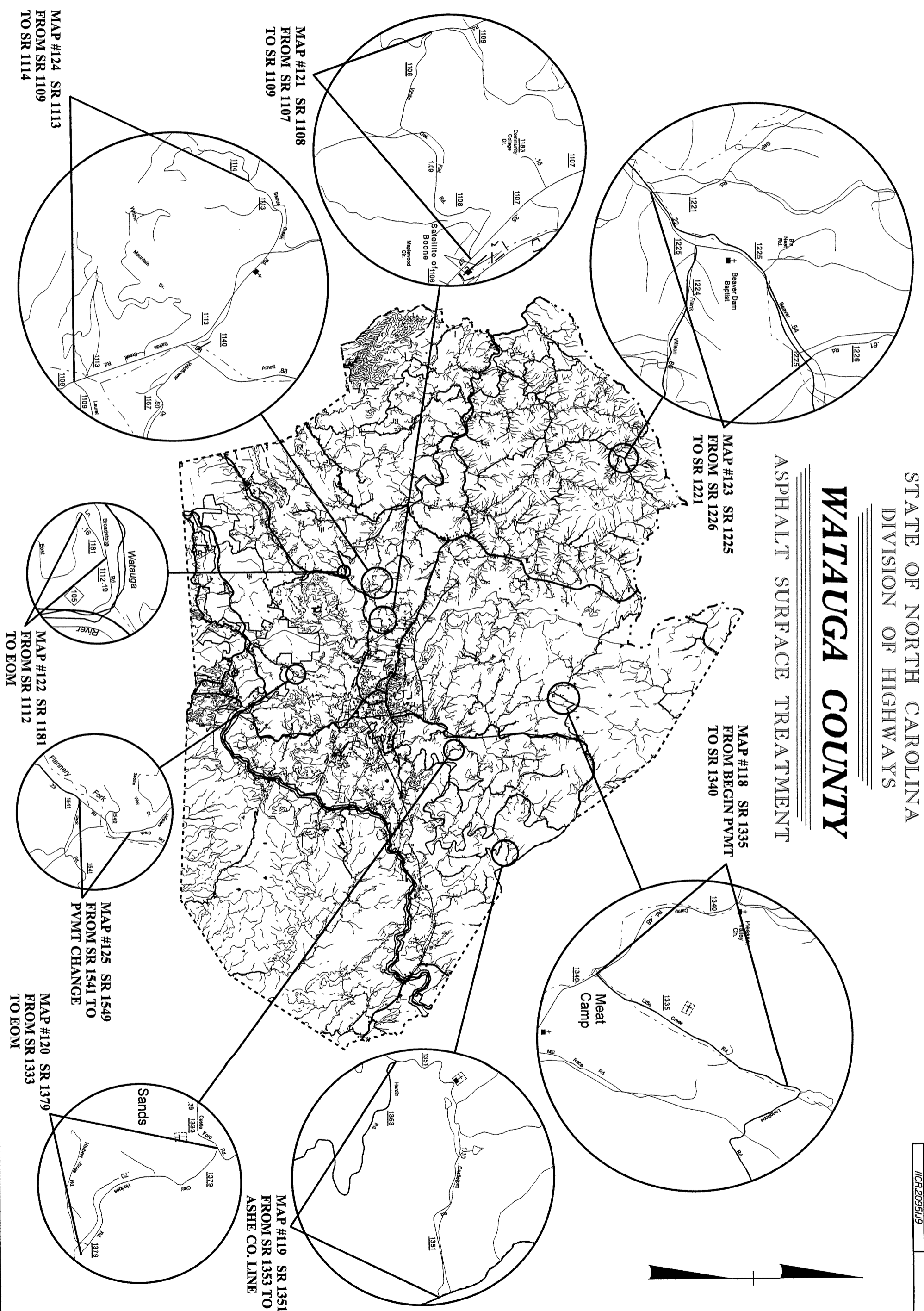
THERMOPLASTIC AND PAINT QUANTITIES

PROJECT	COUNTY	MAP NO	ROUTE	DESCRIPTION	LENGTH	WIDTH	4810000000-E		4835000000-E	4840000000-N	4905000000-N	
							4" WHITE PAINT	4" YELLOW PAINT	24" WHITE PAINT	PAINT MSG SCHOOL	SNOW PLOWABLE MARKERS	
NO												
11C.095085	Watauga	1	SR 1201-A	FROM SR 1206 TO SR 1207	1.58	19	33,370	33,370		EA		
TOTAL FOR PROJ NO. 11C.095085								33,370	33,370			
								66,740				
11C.095086	Watauga	2	SR 1221-B	FROM SR 1222 TO TENN STATE LINE	0.89	20	18,797	18,797				
TOTAL FOR PROJ NO. 11C.095086								18,797	18,797			
								37,594				
11CR.20951.19	Watauga	118	SR 1335	FROM BEGIN PVMT TO SR 1340	0.55	20	11,616	11,616				
11CR.20951.19	Watauga	119	SR 1351	FROM SR 1353 TO ASHE CO LINE	1	18	21,120	21,120				
11CR.20951.19	Watauga	120	SR 1379	FROM SR 1333 TO EOM	0.75	16						
11CR.20951.19	Watauga	121	SR 1108	FROM SR 1107 TO SR 1109	1.09	18	23,021	23,021				
11CR.20951.19	Watauga	122	SR 1181	FROM SR 1112 TO EOM	0.16	18						
11CR.20951.19	Watauga	123	SR 1225	FROM SR 1226 TO SR 1221	0.75	18	15,840	15,840				
11CR.20951.19	Watauga	124	SR 1113	FROM SR 1109 TO SR 1114	1.15	18	24,288	24,288				
11CR.20951.19	Watauga	125	SR 1549	FROM SR 1541 TO PVMT CHANGE	0.51	18	10,771	10,771				
11CR.20951.19	Watauga	126	SR 1529	FROM PVMT CHANGE TO SR 1654	0.95	18	20,064	20,064				
11CR.20951.19	Watauga	127	SR 1524	FROM SR 1608 TO SR 1514	0.83	18	17,530	17,530				
11CR.20951.19	Watauga	128	SR 1504	FROM EOM TO SR 1505	1.85	18	39,072	39,072				
11CR.20951.19	Watauga	129	SR 1504	FROM SR 1505 TO END OF PVMT	0.07	16						
11CR.20951.19	Watauga	130	SR 1504	FROM BEGIN PVMT TO EOM	0.53	16						
11CR.20951.19	Watauga	131	SR 1333	FROM NC 194 TO SR 1395	1.8	18	38,016	38,016				
11CR.20951.19	Watauga	132	SR 1333	FROM SR 1395 TO SR 1331	0.41	18	8,659	8,659				
11CR.20951.19	Watauga	133	SR 1201	FROM SR 1206 TO SR 1203	2.13	20	44,986	44,986				
11CR.20951.19	Watauga	134	SR 1160	FROM SR 1114 TO EOM	0.64	16						
11CR.20951.19	Watauga	135	SR 1122	FROM MP 5.5 TO BRIDGE	1.36	18	28,723	28,723				
11CR.20951.19	Watauga	136	SR 1122	FROM NC 194 TO SR 1130	1.35	18	28,512	28,512				
11CR.20951.19	Watauga	137	SR 1134	FROM NC 194 TO BEGIN 18' PVMT	1.15	20	24,288	24,288				
11CR.20951.19	Watauga	138	SR 1134	FROM BEGIN 18' PVMT TO BRIDGE	1	18	21,120	21,120				
11CR.20951.19	Watauga	139	SR 1134	FROM BRIDGE TO EOM	1.15	18	24,288	24,288				
11CR.20951.19	Watauga	140	SR 1168	FROM NC 105 TO EOM	0.19	16						
11CR.20951.19	Watauga	141	SR 1212	FROM SR 1211 TO EOM	0.94	16	19,853	19,853				
11CR.20951.19	Watauga	142	SR 1306	FROM SR 1323 TO SR 1102	1.26	18	26,611	26,611				
11CR.20951.19	Watauga	143	SR 1306	FROM BEGIN PVMT TO SR 1383	1.1	18	23,232	23,232				
11CR.20951.19	Watauga	144	SR 1306	FROM SR 1383 TO SR 1303	0.6	22	12,672	12,672				
11CR.20951.19	Watauga	145	SR 1308	FROM SR 1306 TO SR 1371	1	20	21,120	21,120				
11CR.20951.19	Watauga	146	SR 1308	FROM SR 1371 TO SR 1309	1.79	20	37,805	37,805				
11CR.20951.19	Watauga	147	SR 1312	FROM US 421 TO SR 1373	0.93	20	19,642	19,642				
11CR.20951.19	Watauga	148	SR 1334	FROM NC 194 TO SR 1350	0.8	17	16,896	16,896				
TOTAL FOR PROJ NO. 11CR.20951.19								579,745	579,745			
								1,159,490				
GRAND TOTAL								32.26	631,912	631,912		
								1,263,824				

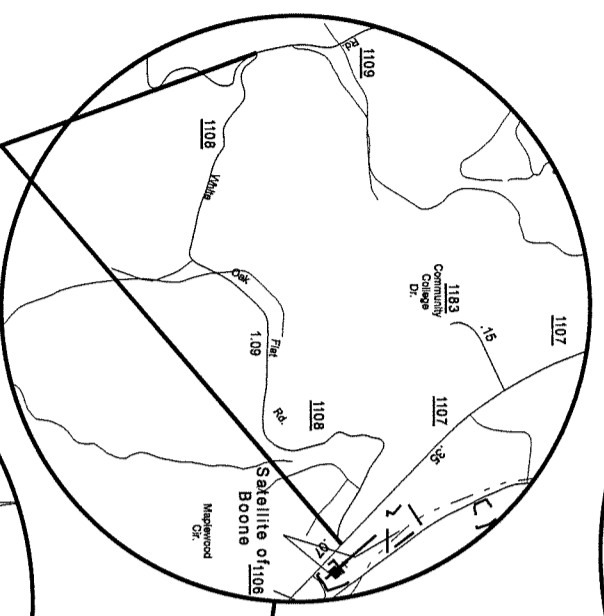
STATE OF NORTH CAROLINA
DIVISION OF HIGHWAYS

WATAUGA COUNTY

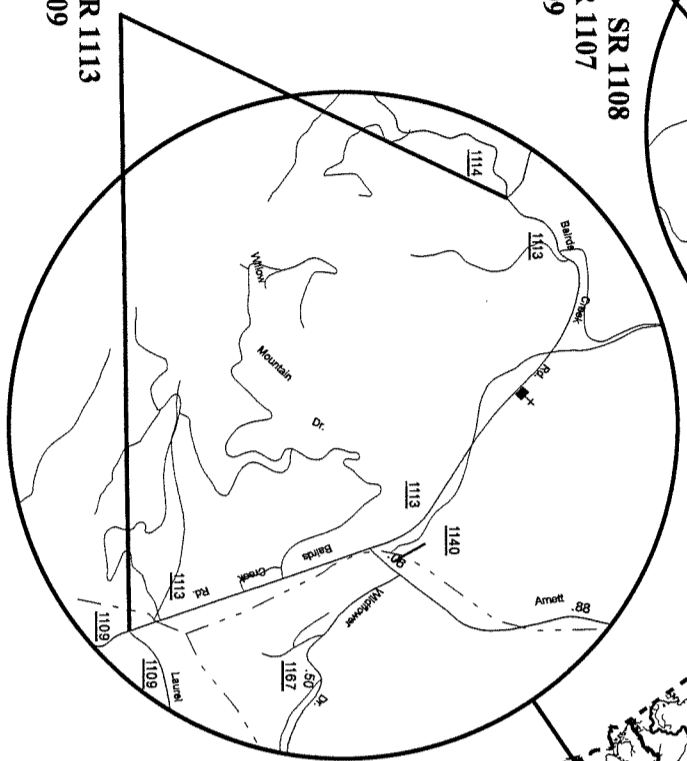
ASPHALT SURFACE TREATMENT



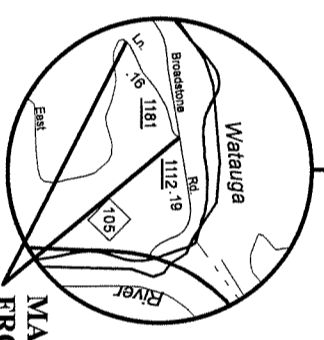
MAP #123 SR 1225
FROM SR 1226
TO SR 1221



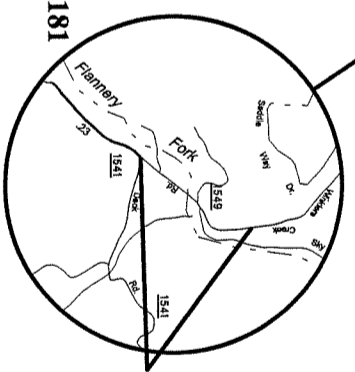
MAP #121 SR 1108
FROM SR 1107
TO SR 1109



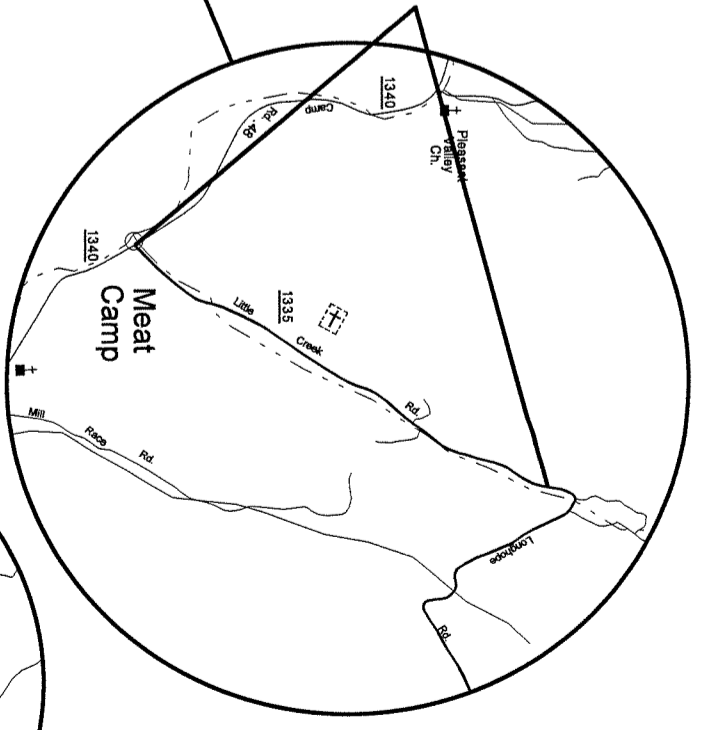
MAP #124 SR 1113
FROM SR 1109
TO SR 1114



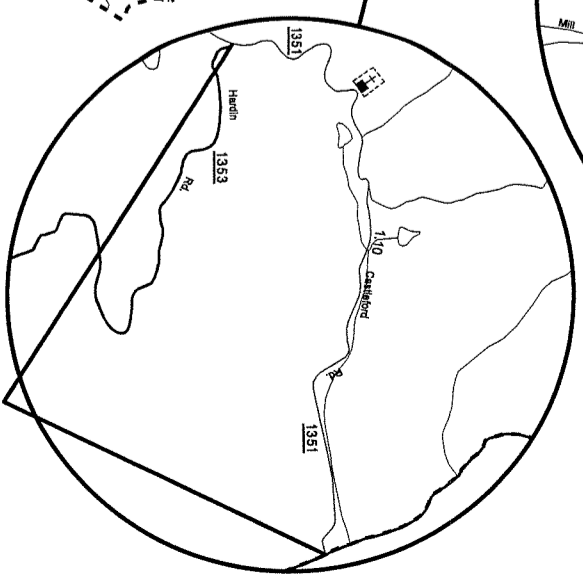
MAP #122 SR 1181
FROM SR 1112
TO EOM



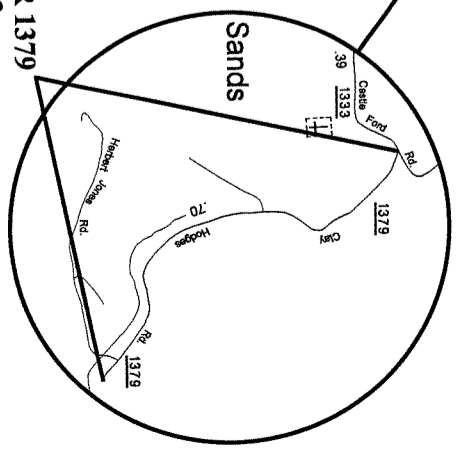
MAP #125 SR 1549
FROM SR 1541 TO
PVMT CHANGE



MAP #118 SR 1335
FROM BEGIN PVMT
TO SR 1340



MAP #119 SR 1351
FROM SR 1353 TO
ASHE CO. LINE



MAP #120 SR 1379
FROM SR 1333
TO EOM

MAP #133 SR 1201
FROM SR 1206
TO SR 1203

STATE OF NORTH CAROLINA
DIVISION OF HIGHWAYS

WATAUGA COUNTY

ASPHALT SURFACE TREATMENT

MAP #129 SR 1504
FROM SR 1505
TO END OF PYMT

MAP #128 SR 1504
FROM EOM TO SR 1505

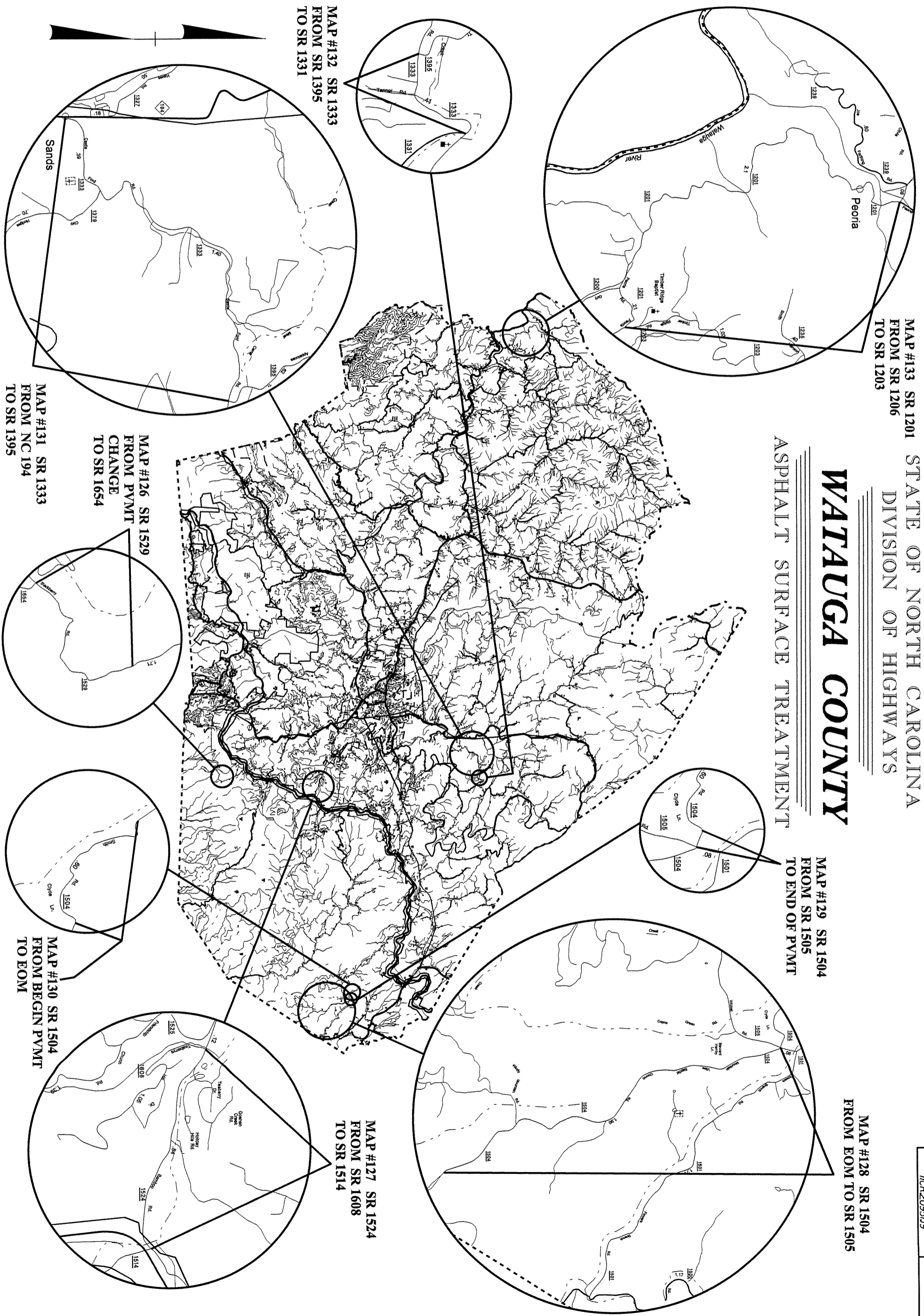
MAP #132 SR 1333
FROM SR 1395
TO SR 1331

MAP #126 SR 1529
FROM PYMT
CHANGE
TO SR 1654

MAP #131 SR 1333
FROM NC 194
TO SR 1395

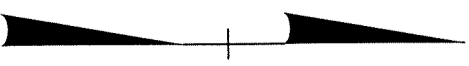
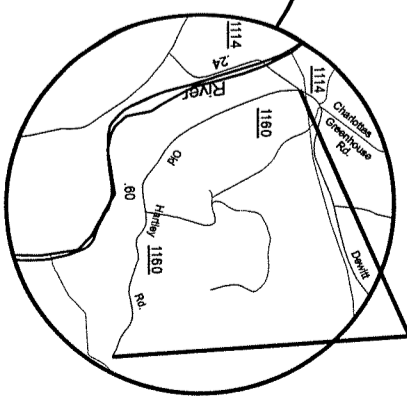
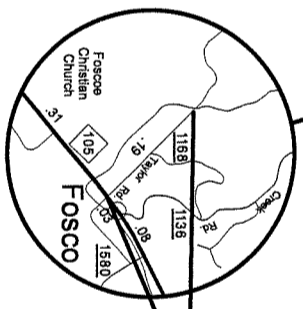
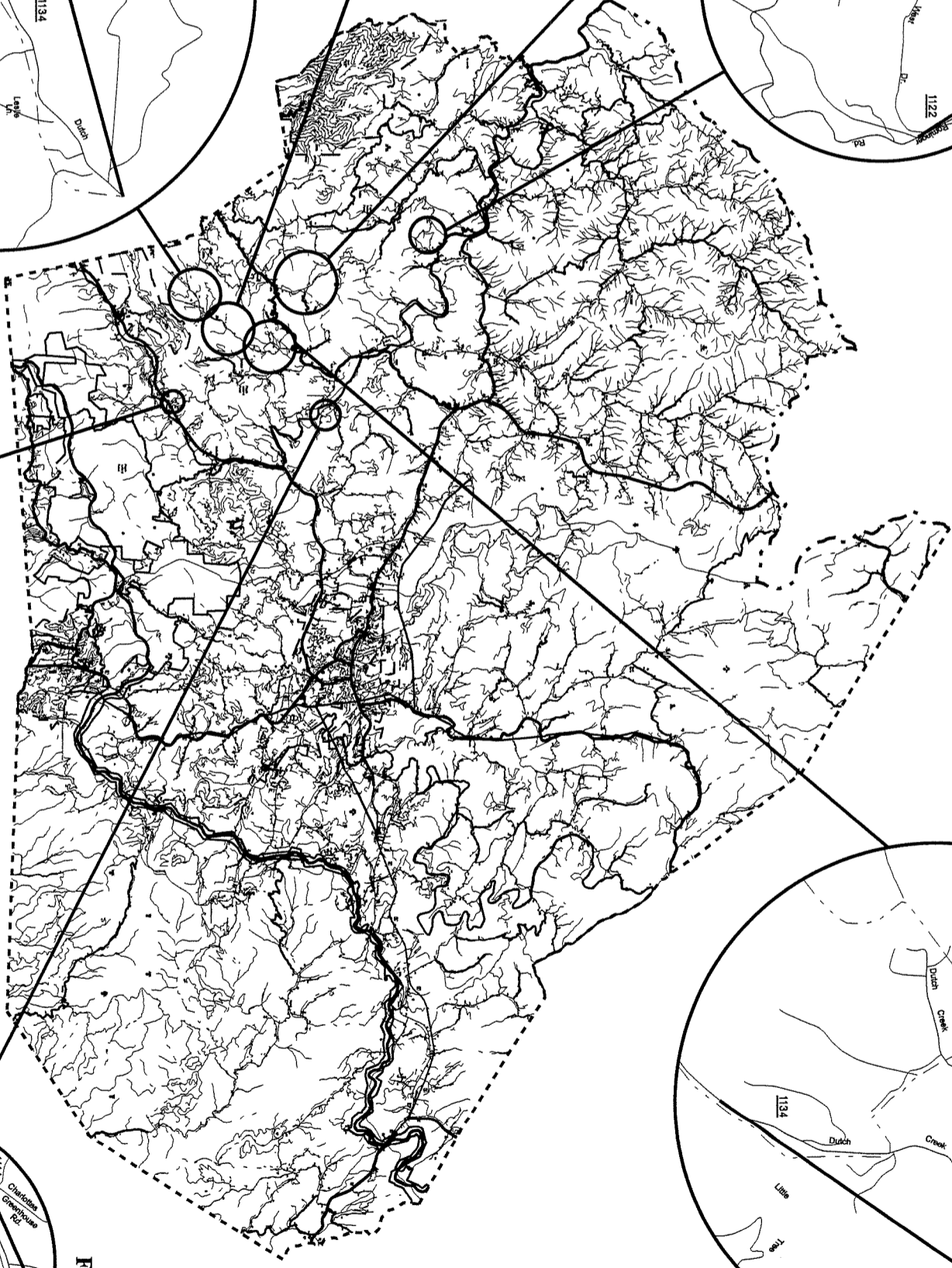
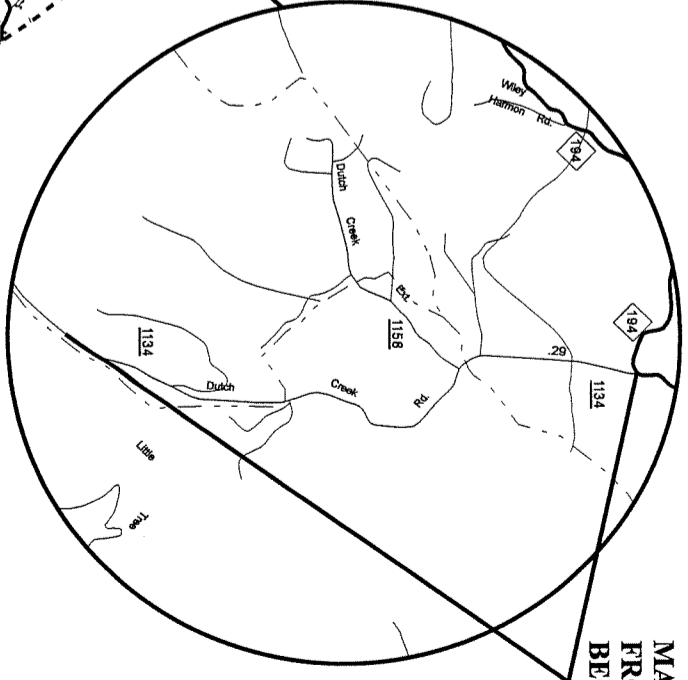
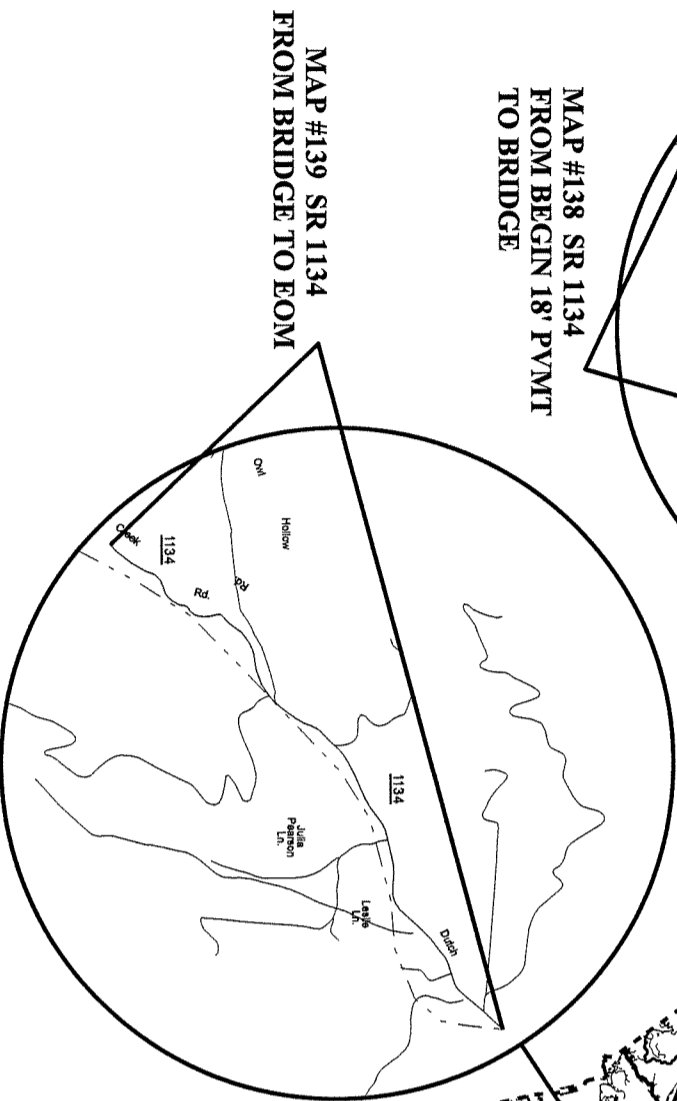
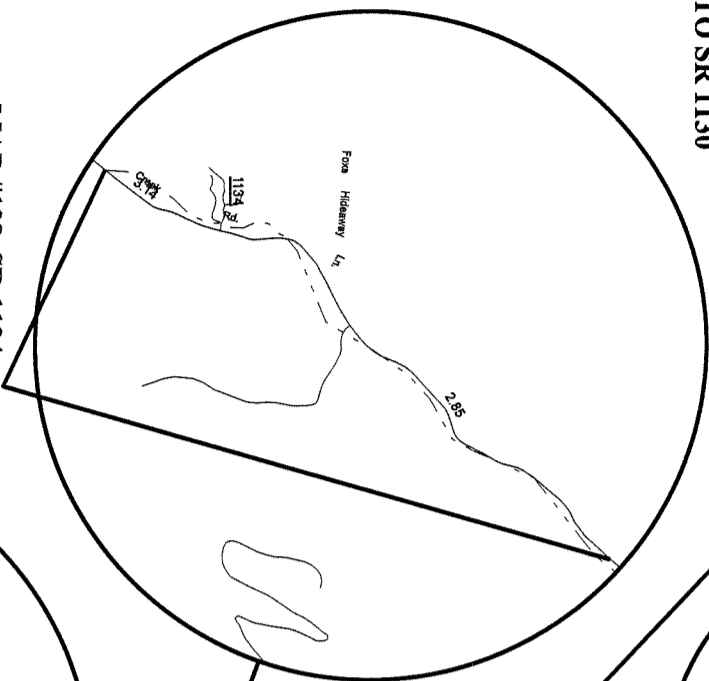
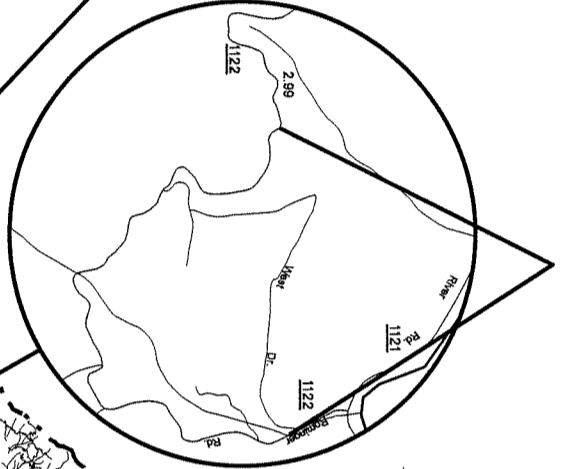
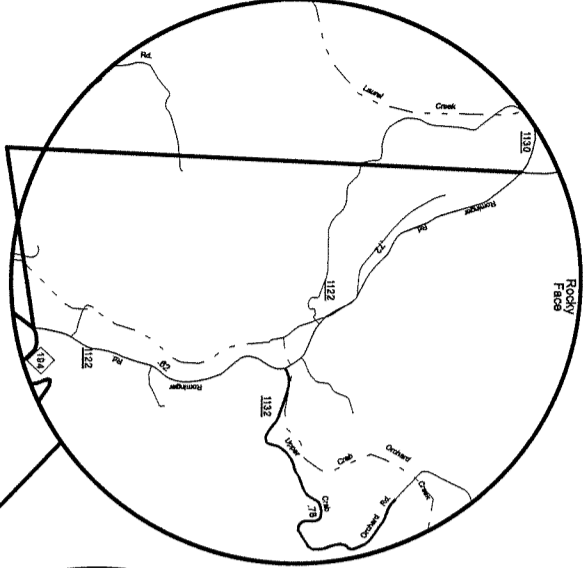
MAP #127 SR 1524
FROM SR 1608
TO SR 1514

MAP #130 SR 1504
FROM BEGIN PYMT
TO EOM



STATE OF NORTH CAROLINA
DIVISION OF HIGHWAYS
WATAUGA COUNTY
ASPHALT SURFACE TREATMENT

PROJECT REFERENCE NO. 11CR2095119	SHEET NO.
--------------------------------------	-----------



MAP #145 SR 1308
FROM SR 1306
TO SR 1371

MAP #141 SR 1212
FROM SR 1211 TO EOM

STATE OF NORTH CAROLINA
DIVISION OF HIGHWAYS
WATAUGA COUNTY
ASPHALT SURFACE TREATMENT

MAP #144 SR 1306
FROM SR 1383
TO SR 1303

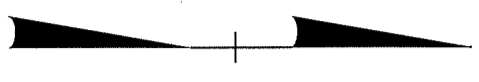
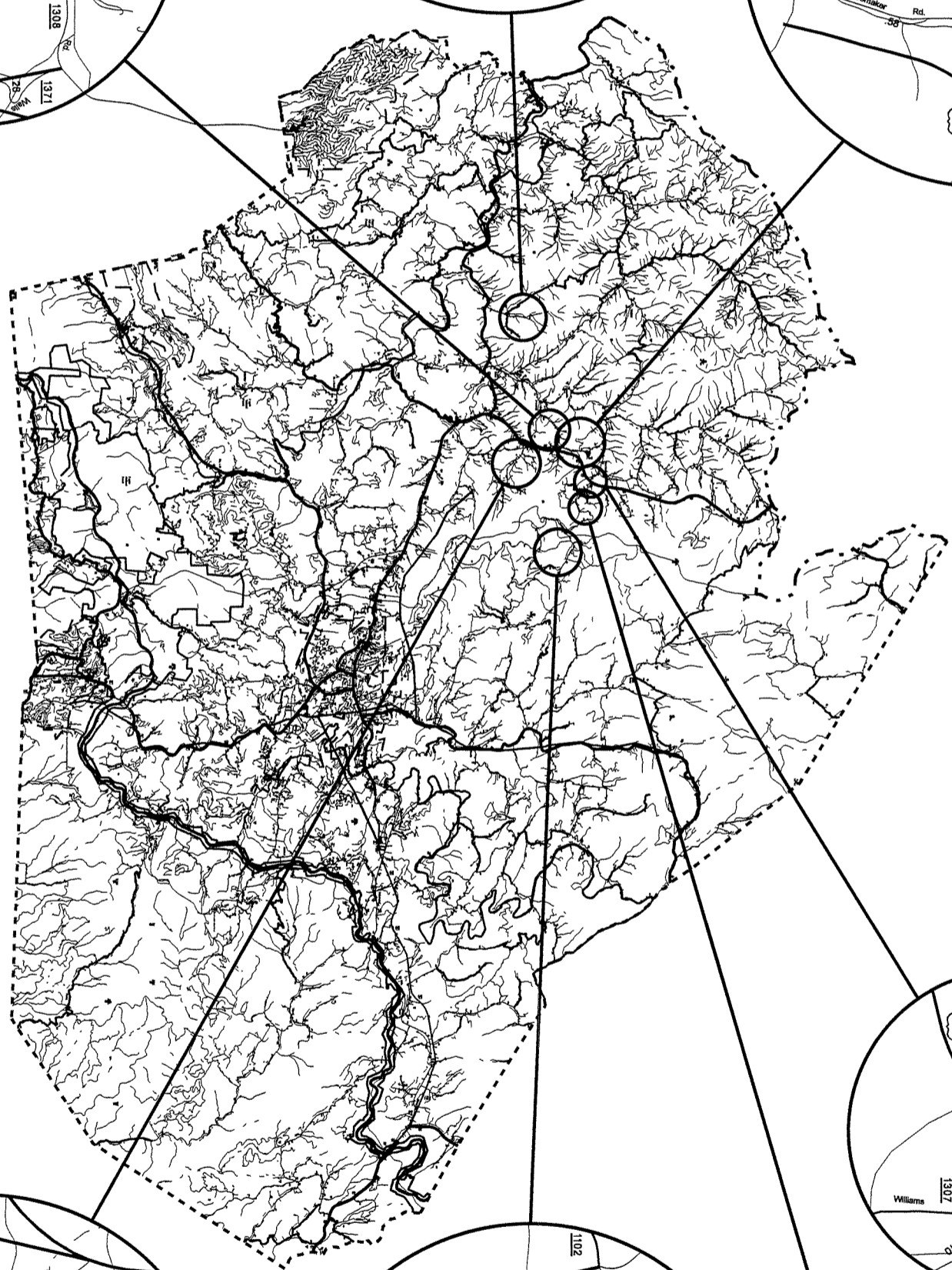
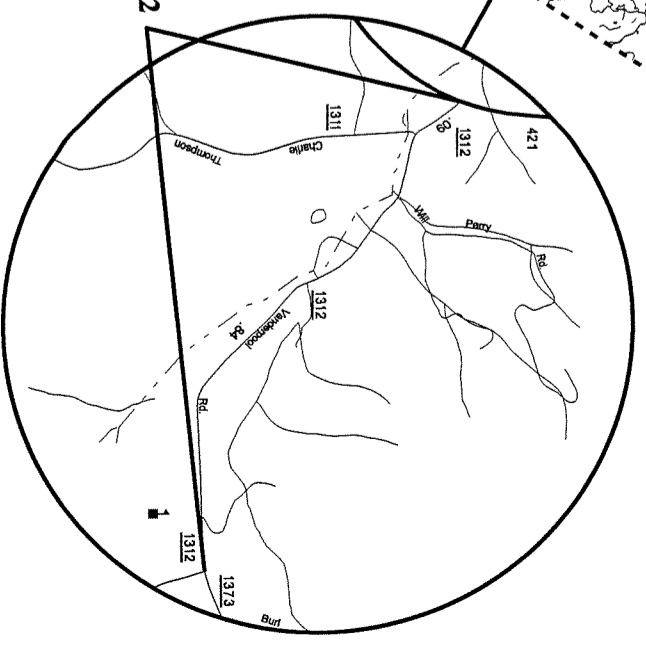
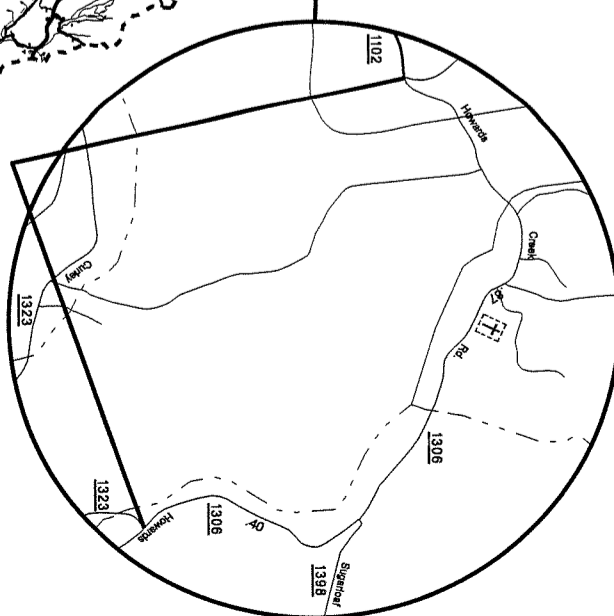
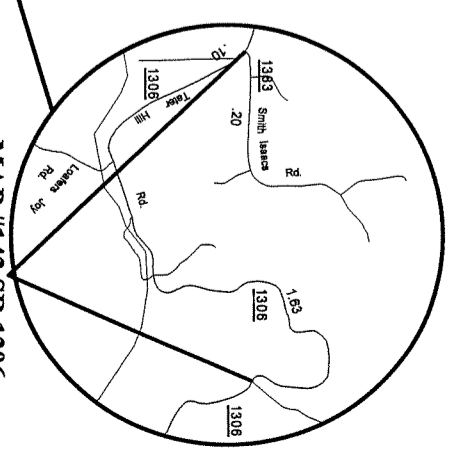
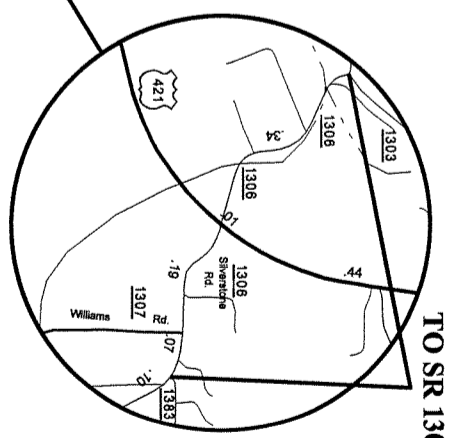
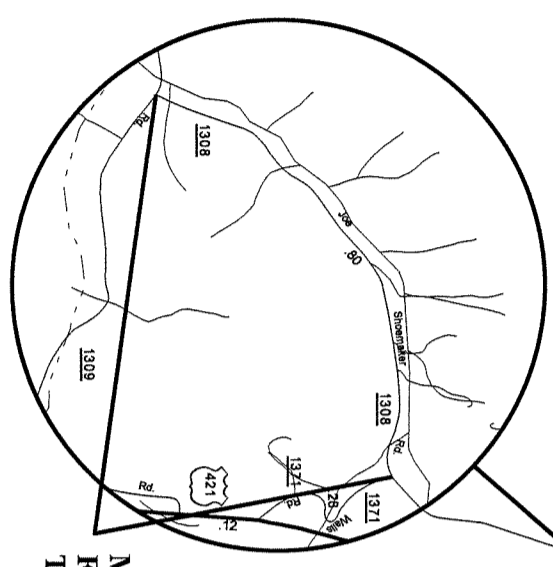
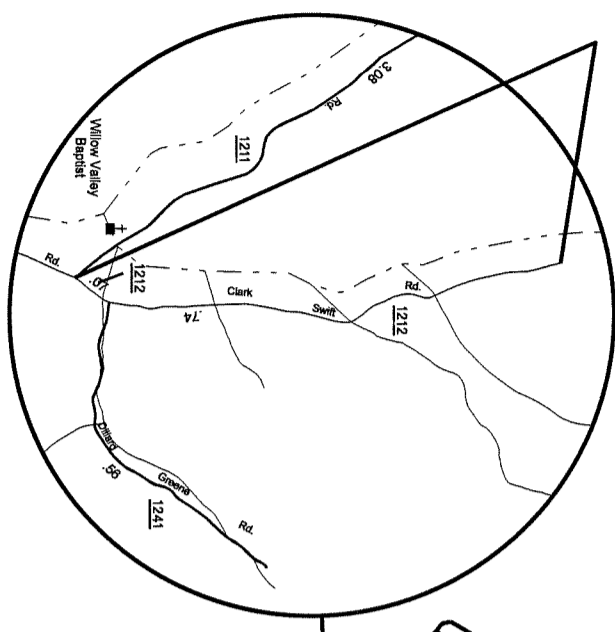
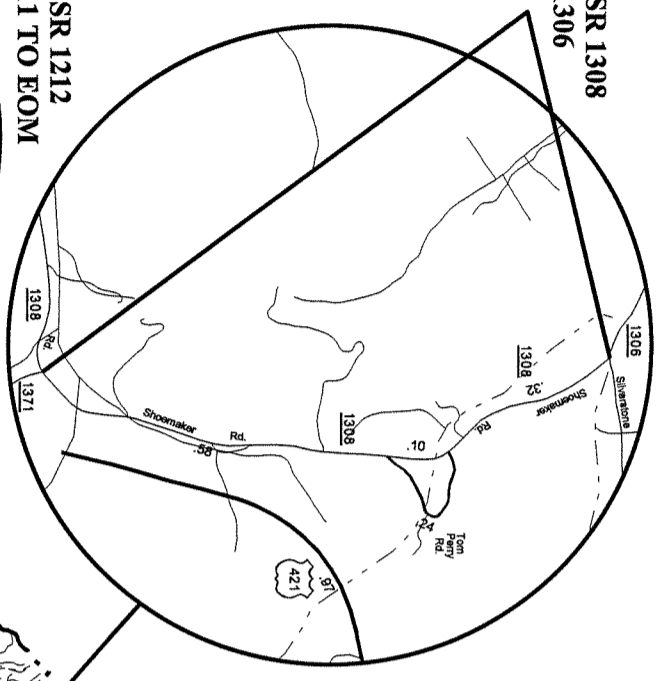
MAP #143 SR 1306
FROM BEGIN PYMT TO SR 1383

MAP #142 SR 1306
FROM SR 1323 TO SR 1102

MAP #146 SR 1308
FROM SR 1371
TO SR 1309

MAP #147 SR 1312
FROM US 421
TO SR 1373

PROJECT REFERENCE NO.	SHEET NO.
11CR2095119	



STATE OF NORTH CAROLINA
DIVISION OF HIGHWAYS

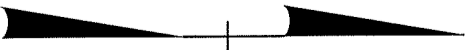
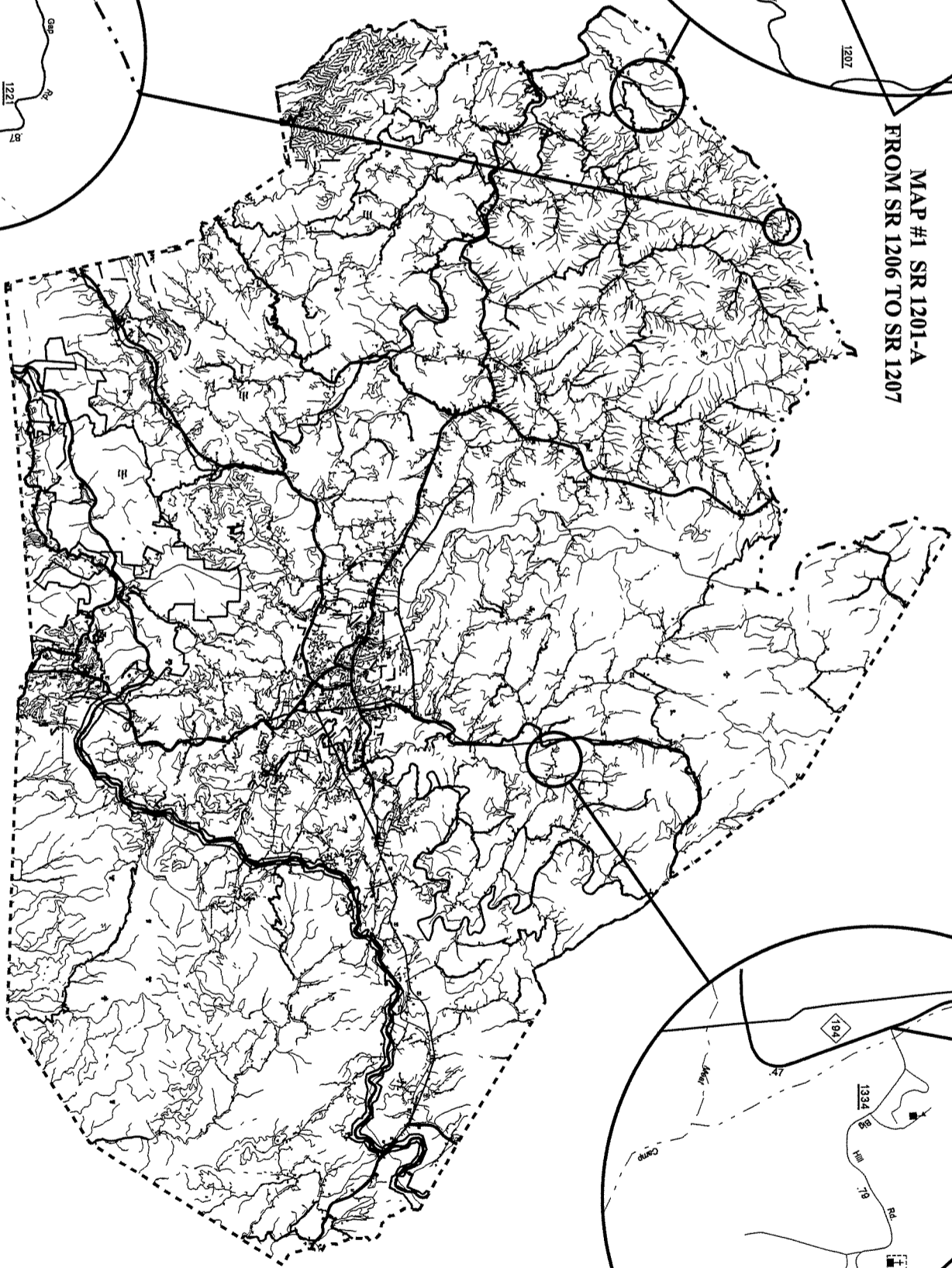
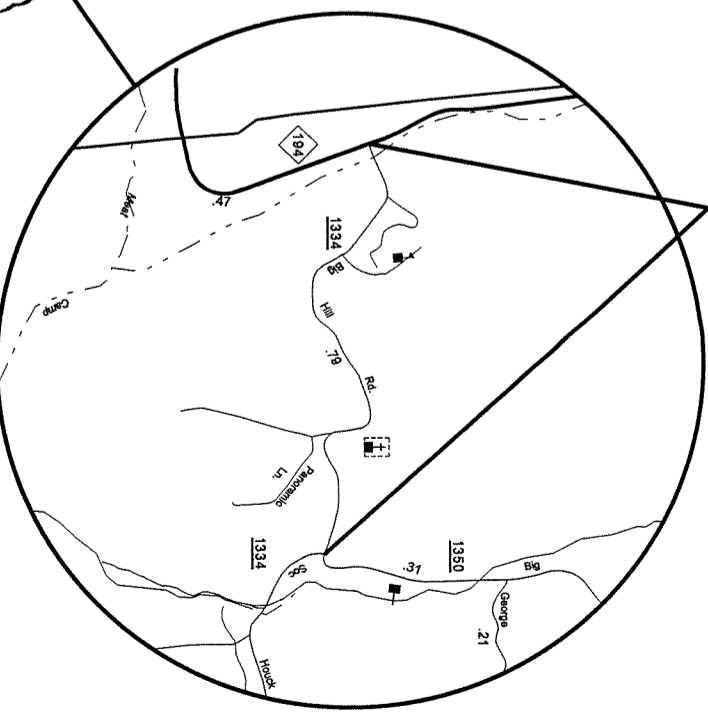
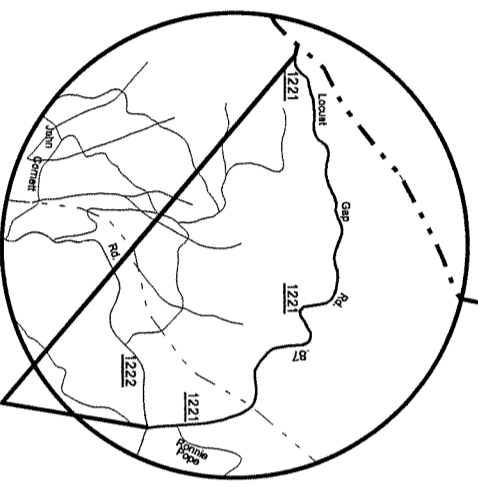
WATAUGA COUNTY

ASPHALT SURFACE TREATMENT

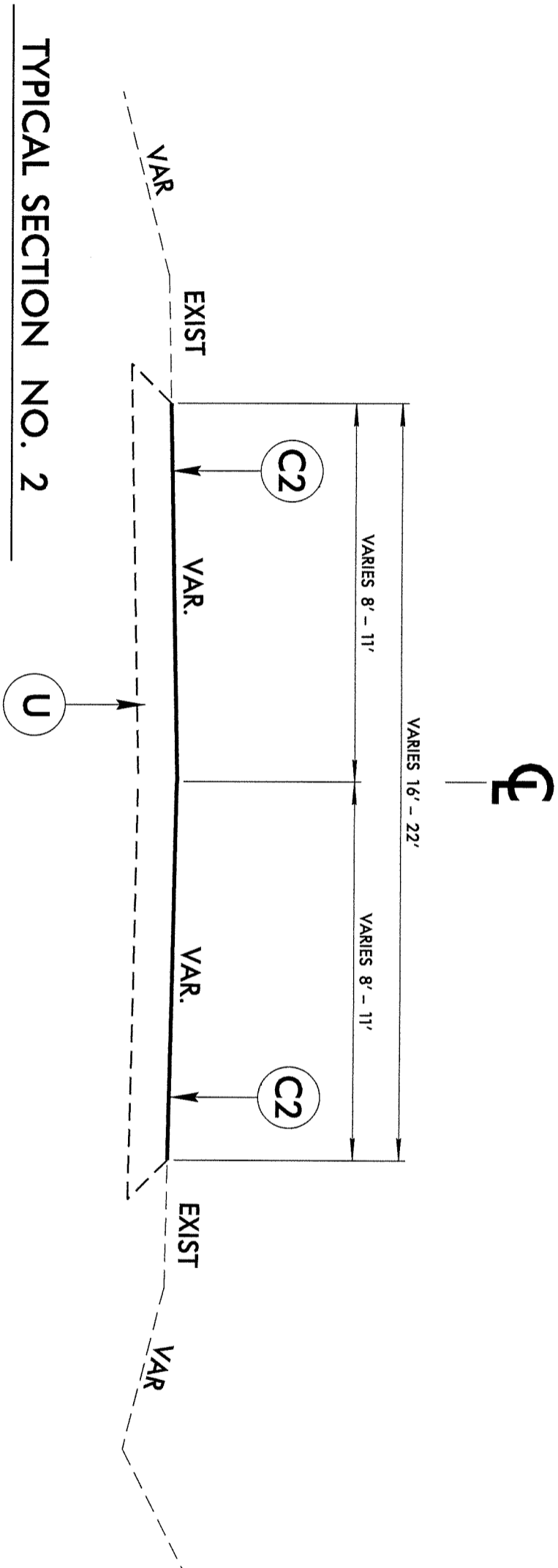
MAP #1 SR 1201-A
FROM SR 1206 TO SR 1207

MAP #148 SR 1334
FROM NC 194 TO SR 1350

MAP #2 SR 1221-B
FROM SR 1222 TO TN STATE LINE



PROJECT REFERENCE NO.	SHEET NO.
JICR 2095119	
JIC 095085/JIC 095086	



TYPICAL SECTION NO. 2

PAVEMENT SCHEDULE	
C2	PROP. ASPHALT SURFACE TREATMENT, TRIPLE SEAL
U	EXISTING PAVEMENT

WATAUGA COUNTY
ASPHALT SURFACE TREATMENT
RESURFACING

DIVISION II

REVISIONS

INIT.	DATE



SCALE: N/A DATE: 3/2012

PREPARED BY: J. L. LAWS

REVIEWED BY:

REVISION BY:

N.C. DEPARTMENT OF TRANSPORTATION
DIVISION of HIGHWAYS
DIVISION ELEVEN